

# CAPABILITIES

## BORED PILES

### EQUIPMENT

Enteco E300-R150 Drilling Rig

Soilmec CM40 Drilling Rig

Caldwell 252 Drilling Rig

P&N 1050 90t Pin Jib Crane

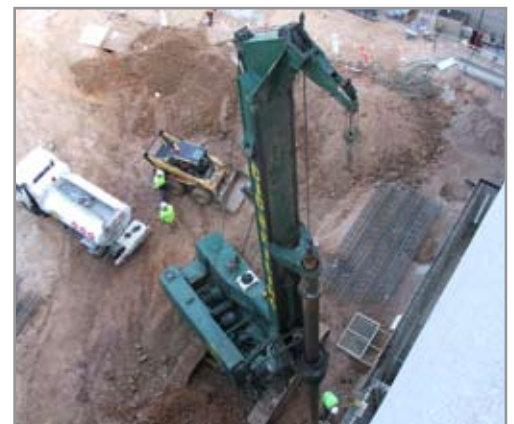
Grove 35t Hydraulic Crane

Using the existing fleet of drilling rigs, DID Piling has the capability to bore diameters up to 2000mm and depths of 40m.

Piles can also be under-reamed to various diameters as required.

Our experienced staff can assist in the interpretation of geotechnical data and advise on appropriate plant requirements for your projects.

DID Piling is also able to construct contiguous wall piling using its current plant.



**DID PILING PTY LTD** E: [mail@didpiling.com.au](mailto:mail@didpiling.com.au) W: [www.didpiling.com.au](http://www.didpiling.com.au)

Head office: 11-15 Millers Road, Wingfield SA 5013 P: 08 8440 7808 F: 08 8440 7839

Qld: 7/783 Kingsford Smith Drive, Eagle Farm QLD 4009 P: 07 3268 3153 F: 07 3268 3183